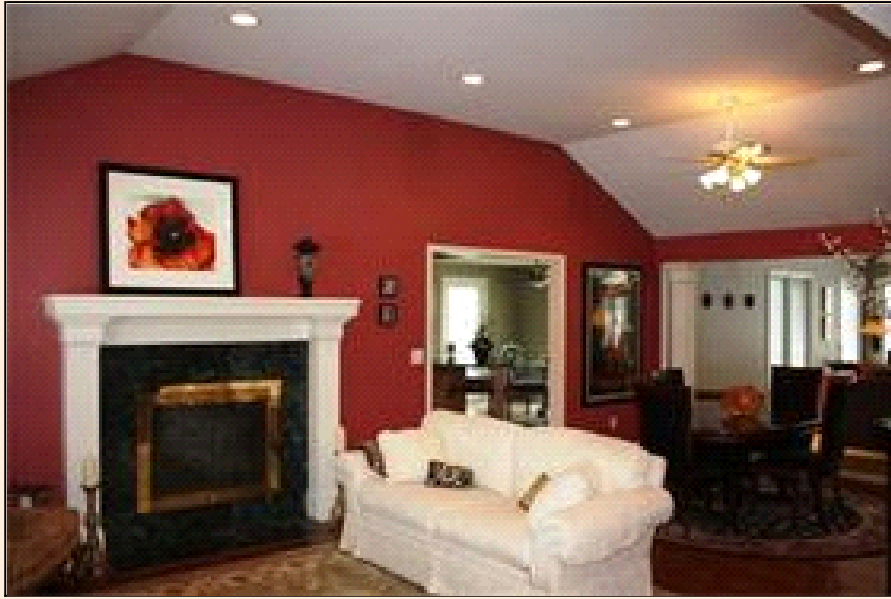


5935 Howe Drive Fairway Home For Sale

Amazing Ranch

PROPERTY DETAILS



Listing Price: **\$400,000**

Listing Address: 5935 Howe Drive

Fairway KS 66205

Bedrooms: 3

Full Baths: 2

Partial Baths: 1

Style: Ranch

Garage: 2 Car

Heat Source: Gas

Schools: Shawnee Mission

QR Code:

On a SmartPhone?
Scan the QR code
to see this listing



PROPERTY DESCRIPTION

Open floor plan Reinhardt ranch. Wheelchair access with 2+ bedrooms, 2.5 baths. Third bedroom used as den, gourmet kitchen with Vulcan range, solid maple cabinets, granite counters, island, custom tile floors, huge vaulted family room, two fireplaces, gleaming hardwood floors, master suite with custom walk-in closet, 1st floor laundry. New Pella windows with blinds inside, large deck overlooks landscaped yard.

CONTACT INFORMATION



Jim Vogel

The Vogel Team

vogelteam.com

11100 Antioch

Overland Park KS 66210

913-323-7212

913-981-4327

jimvogel@reeceandnichols.com





Equal Housing Opportunity

Property information deemed reliable but not guaranteed and should be verified.

Copyright © 2003-2012 Real Pro Systems LLC. All rights reserved.